

HELIAMPHORA FOLLICULATA, A NEW SPECIES OF
HELIAMPHORA (SARRACENIACEAE) FROM THE 'LOS
TESTIGOS' TABLE MOUNTAINS IN THE SOUTH OF VENEZUELA

DR. ANDREAS WISTUBA • Mudauer Ring 227 • 68259 Mannheim • Germany

DR. PETER HARBARTH • Frankenweg 18 • 69221 Dossenheim • Germany

THOMAS CAROW • Am Mustergarten 1 • 97702 Münnerstadt • Germany

Keywords: new taxa: *Heliamphora folliculata*, Venezuela.

Received: 14 April 2001

Introduction

In January 2001 we had the great opportunity to study the flora of some of the least explored of all table mountains of southern Venezuela. Some of the expedition's destinations were the four table mountains in the Aparaman-group ('Los Testigos'), consisting of Aparaman Tepui, Murosipan Tepui, Tereke-Yuren Tepui and Kamarkaiwaran Tepui (Steyermark, 1986; George, 1988). The Aparaman-group is located in the northern part of the Guayana Shield, northwest of Ptari Tepui and east of Auyan Tepui. The altitude of these tepuis lies between 2100 meters (Tereke-Yuren) and 2700 meters (Kamarkaiwaran).

On all tepuis of the Aparaman-group we found a very interesting, and previously undescribed species of *Heliamphora* notable for the unique anatomy of its pitcher-appendage. The appendage is fused with the back of the pitcher forming a hollow structure running downwards on the outside of the back of the pitcher, apparently working as a chamber to store nectar produced by the glands of the appendage. Such a structure has never before been observed in *Heliamphora* or any other member of Sarraceniaceae.

Heliamphora folliculata Wistuba, Harbarth & Carow spec. nov.

Caudex ramosus; foliis rosulatis; amphoris 20-30 cm longis, tubulosis, basin versus infundibuliformibus, extus glabris, parte superiore interiore glabrio; appendice folliculato amphora deorsum adnato.

Inflorescentiis 3-4-floris, racemosis, ad 35 cm longis; flores nutantes; pedicellis 3-6 cm longis; tepalis 4 oblongo-lanceolatis, albidis vel pallide-roseis, 4-4.5 cm longis; staminibus 10, 1-serialibus, filamentis 8 mm longis; antheris oblongo-lanceolatis, ca. 8 mm longis; ovario valde tomentoso; stylo glabro; stigmatibus 3 lobatis; seminibus fuscis, oblongis, ca. 2-3 mm longis, testa conspicue membranaceo-alata.

Herbaceous perennial; Rhizomes branching, plants forming dense clumps. Pitchers infundibulate in the lower third, cylindrical in the upper two thirds, 20-30 cm long and 5-6 cm wide in the upper part; upper part of the pitchers almost completely glabrous on the inner side; pitchers frequently compressed between the front and the back, the front being pressed inwards, leading to a kidney shaped mouth in most older pitchers when viewed from above; the left and right parts of the lobes forming the pitcher-tube often fused asymmetrically at the front of the pitcher-mouth; older pitchers deep red, younger ones golden-green with red veins; pitchers of younger plants much less compressed and more symmetric. Lid bent sharply towards the front, 1 cm long, 0.5 cm wide and 0.5 cm high, slightly helmet shaped; back of the lid of adult pitchers bearing a hollow structure running downwards 5-10 mm; channel from the hollow chamber to the front of the lid. Inflorescence about 35 cm long, 3-4 flowers, peduncle glabrous; pedicels 3-6 cm long; bracts ovate 3-5 cm long; tepals 4, oblong-lanceolate 4-4.5 cm long, 1.8-2.5 cm wide, white

to whitish-pink; 10 stamens in 1 series, filaments 8 mm long, anthers oblong-lanceolate, approximately 8 mm long, 1.5 mm wide; ovary 3 celled, pubescent, style glabrous; seed approximately 2-3 mm long, compressed, ovate, irregularly winged.

Specimens examined

Heliamphora folliculata: Murosipan Tepui, 8 February 2001, Wistuba, Harbarth & Carow No. Mur 08.01.01/1, holotype, flowering specimen (VEN)

Heliamphora folliculata: Murosipan Tepui, 8 February 2001, Wistuba, Harbarth & Carow No. Mur 08.01.01/2, isotype, flowering specimen (VEN)

Heliamphora folliculata: Aparaman Tepui, 8 February 2001, Wistuba, Harbarth & Carow No. Ap 07.01.01/1, isotype, flowering specimen (NY)

Distribution

Heliamphora folliculata is only known from the Aparaman-group of Tepuis, where we found it on all four mountains: Aparaman Tepui, Murosipan Tepui, Tereke Tepui and Kamakeiwaran Tepui. The largest population was observed on Aparaman Tepui where the plants were growing in dense overhanging populations, partly on vertical rock-faces. We did not observe notable morphological differences among the four populations, except for a single group of plants on Kamarkeiwaran that showed an extremely short appendage.

The two other tepuis in the area (Auyan Tepui and Ptari Tepui) are well explored. They are known to house two distinct species (*Heliamphora minor* on Auyan Tepui, and *Heliamphora heterodoxa* on Ptari Tepui) (Maguire, 1978; Steyermark, 1984). Differences between these two species and *Heliamphora folliculata* are given in Table 1. Accordingly, we believe that *Heliamphora folliculata* does not occur on these tepuis, and instead is endemic to the table-tops of the Aparaman-group.

	<i>Heliamphora folliculata</i>	<i>Heliamphora minor</i>	<i>Heliamphora heterodoxa</i>
Pitcher:			
Dimensions	20-30 cm long 5-6 cm wide	8-20 cm long 3-8 cm wide	15-40 cm long 5-6 cm wide
Shape	Infundibulate in the lower third, cylindrical in the upper two thirds; Pitchers frequently compressed between the front and the back, the front being pressed inwards	Slightly ventricose in the lower part, narrowly expanded to tubular in the upper part	Infundibulate to ventricose in the lower third, slightly infundibulate in the upper part, expanded near the mouth
Lid:			
Dimensions	1 cm long 0.5 cm wide	0.5-1 cm long 0.3-0.5 cm wide	1-3.5 cm long 1-3 cm wide
Shape	Bent sharply towards the front, slightly helmet-shaped; back of the lid of adult pitchers bearing a hollow structure running downwards 5-10 mm; not constricted at the base	Strongly helmet-shaped, extremely constricted to stalked at the base	Flattened to helmet-shaped; only slightly constricted around the base
Anthers/ Stamens:			
Length	8 mm	4 mm	6-8 mm
Number	10	15	8-14

Table 1: Comparison between *Heliamphora folliculata*, *Heliamphora minor* and *Heliamphora heterodoxa*.

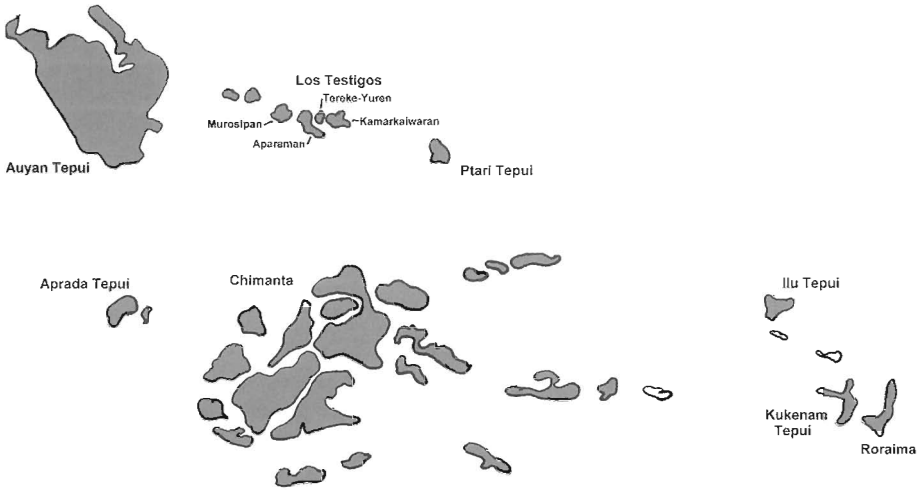


Figure 1: Map indicating the peaks in the complex of tepuis. The indicated peaks have elevations of more than 1500 meters higher than the surrounding plains. Prepared by Dr. Peter Harbarth and Dr. Andreas Wistuba.

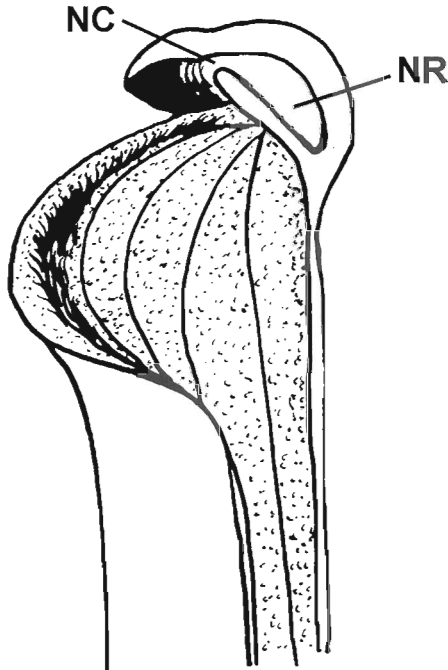


Figure 2: Drawing of the top of a *H. folliculata* pitcher in cross section. "NC" indicates the nectar channel under the lid appendage, "NR" indicates the nectar reservoir. Drawn by Dr. Peter Harbarth.



Figure 3: A group of *H. folliculata* pitchers on Aparaman Tepui. Photograph by Dr. Andreas Wistuba.



Figure 4: Details of *H. folliculata* pitchers. A) nectar (dark red) running down from the lid, B) lid showing the hollow hunchback-like structure, C) pitcher compressed front to back, leading to kidney shaped mouth, D) nectar reservoirs opened by insects. Photographs by Dr. Andreas Wistuba.

Ecology

Heliamphora folliculata plants were usually found growing in exposed areas with short vegetation such as grasses, bromeliads, *Xyris* (Xyridaceae) or *Stegolepis* (Rapateaceae). These plants do not shade the *Heliamphora* significantly, in fact we never found plants growing in shady locations. Most of the dense patches of *Heliamphora folliculata* were found on steep rocks with good drainage. Only rarely have we observed *H. folliculata* growing at really wet places, such as near shallow ponds or seepage slopes.

We opened a number of pitchers but a significant amount of prey was not present, so the efficiency of the trapping mechanism remains doubtful for at least during the dry season (the time we visited the Aparaman group). We have made similar observations for other *Heliamphora* species on other tepuis. However, other authors have reported an efficient capture rate of insects (Gonzales *et al.*, 1991; Jaffe *et al.*, 1992). Jaffe (1992) reported ants (Formicidae) as being a major component of the captured arthropods in *Heliamphora nutans* pitchers. For different *Heliamphora* species, they observed approximately 5-40 arthropods captured by a single leaf.

Another observation associated with the trapping mechanism is the fact that most of the nectar chambers of the appendages were opened and thus destroyed, most likely by wasps seeking the nectar inside. Unfortunately we had no opportunity to observe this happening, so we could not confirm wasps were responsible for this damage.

Interestingly, we frequently observed big black bumblebees pollinating the flowers. Bumblebees have been reported to be pollinators for other species of *Heliamphora* (Renner, 1989).

Another interesting observation was that there was a high percentage of pitchers damaged, most likely by caterpillars.

Related species

The unique architecture of this species' lid places it in an isolated position within the genus. *H. folliculata* does not seem to be particularly closely related to any species in the genus. The lid also easily distinguishes *H. folliculata* from *H. heterodoxa* and *H. minor* (the two *Heliamphora* species that occur on neighboring tepuis).

Etymology

The name '*folliculata*' was chosen to highlight the 'bubble' (=follicle) formed by the nectar spoon, the most distinct characteristic of this species.

Discussion

We assume that the structure formed by the lid is a highly derived characteristic rather than a relict lost in all other species. The diversity of the pitcher nectar spoon in the various species of *Heliamphora*—*H. minor* which has a highly differentiated helmet-like structure, *H. tatei* which has a rather simple flag-like structure, *H. heterodoxa* var. *exappendiculata* with its rudimentary lid, and the new species *H. folliculata* as described in this paper—illustrate the various ways the nectar spoon is shaped in order to function as the predominant structure for the attraction of prey (Jaffe *et al.*, 1995). While other authors reported significant amounts of prey (Gonzales *et al.*; 1991; Jaffe *et al.*, 1992), we view the efficiency of prey capture to be very poor when compared to the amount of dead arthropods regularly found inside the pitchers of other carnivorous pitcher-plants such as *Nepenthes* or *Sarracenia*. However, in the habitats where these latter plants grow, the competition with other non-carnivorous plants is much higher, and also many more arthropods occur there. So it is possible that the true prey-capture efficiency of *Heliamphora* is much higher than it appears at first sight if the extremely low overall density of the arthropod-populations on the table-tops of the tepuis is taken into consideration. The elaborate structures of the nectar spoons might facilitate the capture of a few

more prey, and these small numbers might well be sufficient to give the plant an advantage over other non-carnivorous plants in this harsh environment.

Literature

- George, U. 1988, Inseln in der Zeit, GEO im Verlag Gruner + Jahr AG & Co., Hamburg.
- Gonzalez, J.M., Jaffe, K., and Michelangeli, F. 1991, Competition for Prey Between the Carnivorous Bromeliaceae *Brocchinia reducta* and Sarraceniaceae *Heliamphora nutans*, *Biotropica* 23 (4 Part B): 602-604.
- Jaffe, K., Blum, M.S., Fales, H.M., Mason, R.T., and Cabrera, A. 1995, On Insect Attractants from Pitcher Plants of the Genus *Heliamphora* (Sarraceniaceae), *Journal of Chemical Ecology*, 21(3): 379-384.
- Jaffe, K., Michelangeli, F., Gonzalez, J.M., Miras, B., and Ruiz, M.C. 1992, Carnivory in Pitcher Plants of the Genus *Heliamphora* (Sarraceniaceae), *New Phytologist* 122(4): 733-744.
- Maguire, B. 1978, Sarraceniaceae (*Heliamphora*), in: *The Botany of the Guyana Highland Part-X*, *Memoirs of the New York Botanical Garden* 29: 36-61.
- Renner, S.S. 1989, Floral Biological Observations on *Heliamphora tatei* Sarraceniaceae and Other Plants from Cerro de la Neblina in Venezuela. *Plant Systematics & Evolution* 163 (1-2): 21-30.
- Steyermark, J.A. 1984, Venezuelan Guyana, *Annals of the Missouri Botanical Garden* 71: 302-312.
- Steyermark, J.A. 1986, Expedition to the Lost World, *Annals of the Missouri Botanical Garden* 74(7): 5-7.

NEW BACK ISSUE PRICING

Back issues are now \$20 per volume, plus postage & handling. Postage & handling for orders of 1 to 5 volumes is \$7.00 for USA, \$10.00 for Canada and Mexico, \$15 International. Double the postage & handling charges for 6 to 10 volumes, triple it for 11 to 15 volumes, etc. California residents must add \$1.60 sales tax per volume. The price is expected to increase to \$25 per volume 1 January 2002.

CPN BACK ISSUE CLEARANCE SALE



The ICPS is clearing out all CPN back issues more than 5 years old. All available printed issues of Volumes 7-24 (1978-1995) are at a special price of \$125.00 plus shipping and handling. Issues 1986 #1, 1987 #2, 1988 #3, #4, 1989 #1, #2, #3, and 1995 #1 are no longer available. Other issues are in short supply, so do not delay. If, when your order arrives, more than five additional issues are unavailable we will provide partial refunds. Check the ICPS web site and future issues of CPN for updates on back issue sales.



Postage & handling is \$20 for USA, \$30 for Canada and Mexico, \$50 International. California residents must add \$10.00 sales tax.

If ordered at the same time, volumes 25-29 (1996-2000) are \$15.00 per volume. Postage & handling are included. California residents must add \$1.20 sales tax per volume.

TO ORDER

Send your order to our Fullerton address (see inside cover). All prices are US\$. Back issues will only be sold to ICPS members.

CARNIVOROUS PLANT NEWSLETTER

Journal of the International
Carnivorous Plant Society
www.carnivorousplants.org

Volume 30, Number 4
December 2001



Front Cover: *Darlingtonia*: crimson fang variant. See article on page 100.

Back Cover: A new species of *Heliamphora*, photographed by Dr. Andreas Wistuba. See article on page 120.

Carnivorous Plant Newsletter is dedicated to spreading knowledge and news related to carnivorous plants. Reader contributions are essential for this mission to be successful. Do not hesitate to contact the editors with information about your plants, conservation projects, field trips, or noteworthy events. Contributors should review the "Instructions to Authors" printed in the March issue of each year. Advertisers should contact the editors. Views expressed in this publication are those of the authors, not the editorial staff.

All correspondence regarding dues, address changes and missing issues should be sent to the Membership Coordinator at the ICPS. Do not send such correspondence to the editors. Checks for subscriptions and back issues should be made to the ICPS in US funds. Dues for 2002 are \$25.

ICPS, Inc.
PMB 330
3310 East Yorba Linda Blvd.
Fullerton, CA 92831-1709, USA
icps@carnivorousplants.org

President
Vice President
Secretary
Board Member
Seed Bank

David Gray, email: david@carnivorousplants.org
Carl Mazur, email: carl@carnivorousplants.org
Cindy Slezak, email: cindy@carnivorousplants.org
Jay Lechtman, email: jay@carnivorousplants.org
John Brittmacher, email: john@carnivorousplants.org, seedbank listed in this issue.

Editors:

Barry Meyers-Rice, P.O. Box 72741, Davis, CA 95617, USA, email: barry@carnivorousplants.org
Jan Schlauer, Zwischenstr. 11, D-60594 Frankfurt, Germany, email: jan@carnivorousplants.org
Page Layout: Steve Baker, email: steve@carnivorousplants.org

Date of effective publication of the September 2001 issue of Carnivorous Plant Newsletter: 7 September 2001.

The ICPS is the International Registration Authority (IRA) for cultivated carnivorous plants according to The International Code For The Nomenclature of Cultivated Plants. Send relevant correspondence to the ICPS, Inc.

PUBLISHER: ICPS, Inc., Fullerton, California. Published quarterly with one volume annually. Desktop Publishing: Steve Baker, 5612 Creek Point Drive, Hickory, NC 28601. Printer: Kandid Litho. Logo and masthead art: Paul Milauskas. Dues: \$25.00 annually. Reprints available by volume only © 2001 Carnivorous Plant Newsletter. All rights reserved. ISSN #0190-9215.

